



**zettransport**<sup>®</sup>  
Your logistic partner

## The Company

Logistics especially international transport, is the field in which we specialise and where we have been consistently developing for 25 years.

Ever since our company launched in 1993, we have focused on providing our customers with comprehensive services of the highest quality. We are helped in this by a team of qualified experts, a leading-edge fleet and technology as well as by the highly efficient organisation of work and an individual approach to every customer.



## Mission and Quality

We devise solutions tailored to customer expectations.

We always look ahead, searching for new prospects of market expansion and meeting the expectations of our business partners. Our primary goal, achieved through constant development, is to satisfy the needs of our customers and, in consequence, to build lasting business relations with them on the foundation of mutual trust and understanding. Achieved to the highest standards, these goals give us true satisfaction and serve as a basis for a joint success!

## Sustainable development

With the environment in mind.

A company operating in the field of transport is more than likely to exert some impact on the environment. With this in mind, for many years we have been exercising care to ensure that our company develops in a sustainable manner. We regularly renew our equipment and have adopted a rigorous fuel-consumption policy as well as training for our drivers to teach them eco-friendly and safe driving tactics. We have successfully reduced fuel consumption by 4 litres over the last 5 years.

## ZET Group

The ZET Group represents an integrated approach to transport, shipping, and logistics, and comprises several entities. Which entities makeup the ZET Group?

### ZET Transport

A comprehensive approach to the area of forwarding and logistic services, international transport and domestic transport.

### ZET Transport **Austria**

Branchoffice in Austria.

### ZET Transport **Slovakia**

Branchoffice in Slovakia.

### ZET Transport **Agencja Celna**

Comprehensive package of customs services.

### ZET Logistic sp. z o.o.

Set up to accomplish defined transport projects.

### Truck Partner

A seller of parts and a service station for trucks, tractors, and semi-trailers. An authorised service station of the Iveco brand.

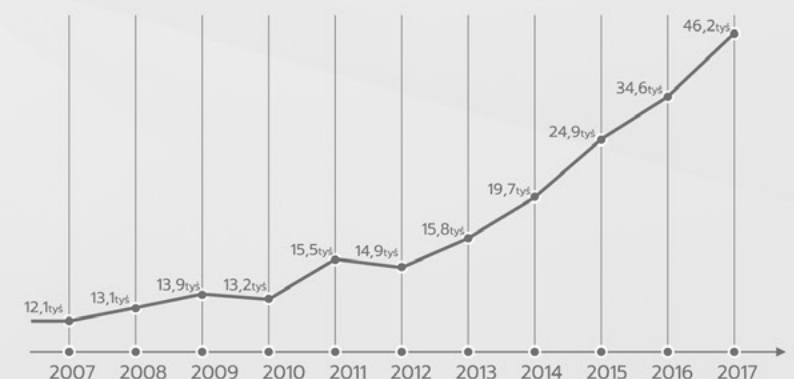
### ITC

An independent commercial equipment dealer.

## ZET Transport in figures



### Transports completed – years 2008-2018



## OFFER

### Road transport

We cooperate with all industries throughout Europe and Western Asia. We offer regular service with a guarantee of year-round deliveries as well as carrying out project cargo deliveries. Not afraid of new challenges, we are open to any non-standard needs our customers might have.

Among our services you can find:

- FTL and LTL transports,
- ADR transports (transport of hazardous materials) on all routes covered by us,
- transport in controlled temperatures, requiring special thermal conditions, e.g. of pharmaceuticals.



### Road Feeder Service

The road transport of air freight is one of our areas of specialisation. We provide it based on properly trained, 2-member driver teams. This type of transport utilises specialised semi-trailers with roller bed floors.

The status of Registered Agent which we were awarded by the Civil Aviation Office in Warsaw, means that we can guarantee the highest safety standard in the supply chain.

### Dedicated solutions

We are open to our Customers' needs.

Every new project is a challenge for us. That's why we put an extra effort and maximum commitment, even if they entail additional investments. Our customers have direct access to those in charge at the company, which makes our cooperation even more effective. After all, when it comes to transport, there's no time for mix-ups!



### Complementary services

Operating on all-round basis.

We offer additional TSL services which not only save you time, but also reduce the stress factor usually associated with the shipment of goods.

### BDF – swapbodies system

An effective tool for supply chain optimisation.



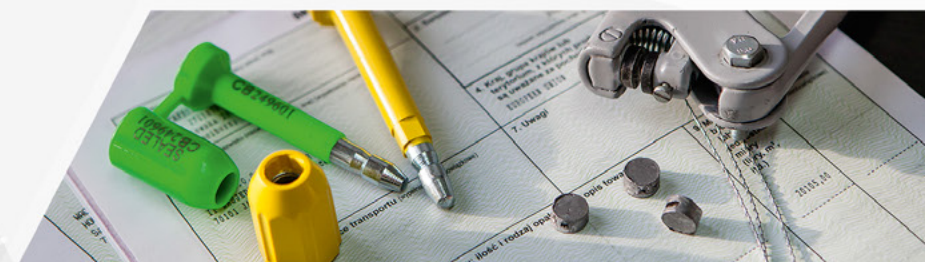
BDF is a system of swap bodies in which the build can be easily detached from the chassis. Swap bodies come with various types of build (tarpaulin, rigid wall, refrigerator, etc.) and can be used both as a means of transport and a mobile storage module.



More details

### Our own customs agency

ZET Transport Agencja Celną (Customs Agency), with branches in Nowy Sącz and Racibórz, was launched in 2004. The Agency offers a comprehensive and reliable service package, including assistance in the preparation of customs-clearance documents, the Common Transit Procedure, customs declarations, customs consultancy, and the securing of customs and tax payments.



## The fleet and technology

We will select the right vehicle for the type of your shipment.

Our fleet consists of over 300 vehicles with an average age of less than 1.5 years. See our vehicles!






- All of the vehicles are provided with load-safety equipment (belts, anti-slip mats, edge protectors, etc.) and the drivers wear the necessary protective clothing and accessories (helmets, reflective vests, safety footwear, eye protection, etc.).
- Part of our fleet is suited for the transport of ADR hazardous materials.
- For emergency deliveries, we have two-driver teams at your disposal.

- The ZET Transport tractors are covered by the manufacturer's service package. This is in addition to our own mobile service team available 24/7. If needed, we can contact one of the third-party service stations from our partner network operating all across Europe.
- Each vehicle comes with a GPS backed by the Geofencing system and a document scanner. We also use TRANSICS, a telematics fleet management system for a smooth exchange of information between the driver, vehicle and the dispatch centre.

## Types of vehicles:



### Standard tarpaulin semi-trailers

-  Certyfikate XL
-  Capacity – 33/34 pallets
-  Loading dimensions
 

Length:	13,60m
Width:	2,48m
Height:	2,70m
Capacity:	25t






### Coilmulde

-  Certyfikate XL
-  Floor trough for coils
-  Loading dimensions
 

Length:	13,60m
Width:	2,48m
Height:	2,70m
Capacity:	24t



### Refrigerated semitrailers/isotherm

-  Temperature controlled
-  Rigid walls
-  Loading dimensions
 

Length:	13,30m
Width:	2,46m
Height:	2,70-3,00m
Capacity:	24t



### BDF

-  Learn more about BDF 
-  Different kinds of construction
-  Loading dimensions
 

Length:	2x7,80m
Width:	2,48m
Height:	2,75-3,00m
Capacity:	24t

